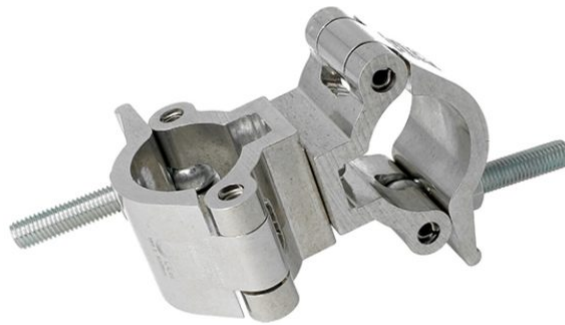


Double Collier orientable 90 degrés LIGHTWEIGHT SWL 500 kg



DO DT58110

Principales caractéristiques

Double Collier orientable 90 degrés LIGHTWEIGHT SWL 500 kg . (Ref : DO D/T58110)

Lightweight 90° Fixed Coupler

A pair of high tensile extruded aluminium clamps back to back, locked at 90 degrees that are suitable for 48mm to 51mm diameter tubes. It has a WLL of 500Kg and uses a pair of 50mm wide clamps. Ideal for trussing as it will not damage the cords. Available in polished silver or powder coated black.

