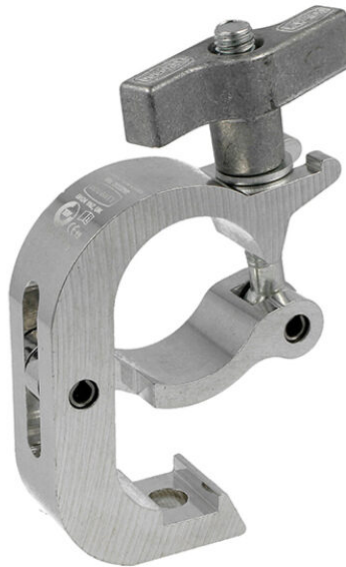


Collier déportée 50 mm TRIGGER CLAMP SWL 200 kg



DO DT58860

Principales caractéristiques

Collier déportée 50 mm TRIGGER CLAMP SWL 200 kg . (Ref : DO D/T58860)

Trigger Clamp Basic

A high tensile extruded aluminium trigger clamp that is suitable for 48mm to 51mm diameter tubes. It has a WLL of 200Kg and is 30mm wide. Slotted to hold captive an M12 nut or bolt head. Ideal for hanging large moving heads on trussing as it will not damage the cords. Available in polished silver or powder coated black.

