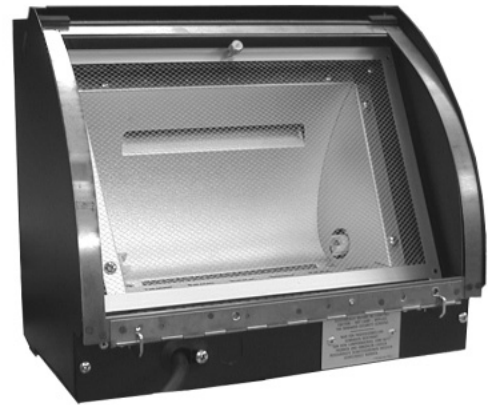




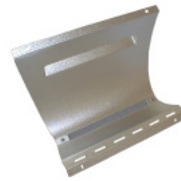
26010 ORION 1 1250 W 230V CE  
 26011 ORION 1 1000 W 120V - USA/CAN



**4005/180** WIRE GUARD ASSEMBLY - 230V CE



**4000/165** COLOUR FRAME



**4005/6** MIRROR - 230V CE



**4005/5** MIRROR SIDE PANELS PACK OF 2 PIECES



**210/1** LAMPSOCKETS PACK OF 2 PIECES



**156/3** CERAMIC TERMINAL BLOCK E83-3 WAY 230V CE



**4130/8** CABLE CLAMP 230V CE



**4005/9** INPUT CABLE 230V CE



**4310/20** RUBBER FOOT PACK OF 4 PIECES



**4005/7** ADJUSTABLE FOOT



**4005/8** HOUSING CONNECTORS CLIP PACK OF 3 PIECES



**4005/22** HANDLE FOR ORION



**4005/379** WIRE GUARD ASSEMBLY 120V cUL



**4005/21** MIRROR -120V cUL



**261/18** CABLE CLAMP MK1 120V cUL



**156/5** CABLE CLAMP MK2 120V cUL



**156/1** CERAMIC TERMINAL  
BLOCK E82-2 WAY  
120V - cUL



**4005/200** INPUT CABLE  
ASSEMBLY – 120V cUL

N°	QC Pkg.N°	English	Italiano	Deutsch
1	4005/180	Wire Guard Assembly - 230V CE	Rete Di Protezione - 230V CE	Schtzgitter - 230V CE
2	4000/165	Colour Frame	Portagelatina	Fafilter
3	4005/6	Mirror - 230V CE	Specchio - 230V CE	Reflektor - 230V CE
4	4005/5	Mirror Side Panels L & R - Pack of 2 pieces	Fiancate Lucide DX - SX Conf.da 2	Reflektorseitenwaende
5	210/1	Lampsockets - Pack of 2 pieces	Portalampane - Conf.da 2	Socket - 2er Pack
6	156/3	Ceramic Terminal Block E83 3-way 230V CE	Morsettiera in steatite E83 3Poli - 230V CE	Klemmenleiste E83 3Pole - 230V CE
7	4130/8	Cable Clamp - 230V CE	Serracavo - 230V CE	Kabelhalterung - 230V CE
8	4005/9	Input Cable - 230V CE	Cavo D'alimentazione - 230V CE	Anschlusskabel - 230V CE
9	4310/20	Rubber Foot - Pack of 4 pieces	Piedino in Gomma - Conf.da 4	Gummifuss - 4 Stueck
10	4005/7	Adjustable Foot	Piede Regolabile	Verstellbarer Fuss
11	4005/8	Housing Connector Clip - Pack of 3 pieces	Molla Aggancio Involucro - Conf.da 3	Gehaueverbindungsfeder - 3 Stueck
12	4005/22	Handle for ORION	Maniglia per ORION	Handgriff fur ORION
13	4005/379	Wire Guard Assembly - 120V cUL	Rete Di protezione - 120V cUL	Schutzgitter - 120V cUL
14	4005/21	Mirror - 120V cUL	Specchio - 120V cUL	Reflektor - 120V cUL
15	261/18	Cable Clamp Mk1 - 120V cUL Valid only for ORION 1 prior to the year 2000	Serracavo - 120V cUL Valido per ORION 1 prima dell'anno 2000	Kabelhalterung Mk1 - 120V cUL Nur gueltig fuer Orion 1 vor dem Jahr 2000
16	156/5	Cable Clamp Mk2 - 120V cUL	Serracavo Mk2 - 120V cUL	Kabelhalterung Mk2 - 120V cUL
17	156/1	Ceramic Terminal Block E82 2way -120V cUL	Morsettiera in steatite E82 2Poli - 120V cUL	Klemmenleiste E82 2Pole - 120V cUL
18	4005/200	Input Cable Assembly - 120V cUL	Cavo D'alimentazione - 120V cUL	Anschlusskabel - 120V cUL

N°	QC Pkg.N°	Espanol	Francais
1	4005/180	Malla De Proteccion - 230V CE	Grillage De protection - 230V CE
2	4000/165	Portafiltro	Portefiltre
3	4005/6	Reflector - 230V CE	Reflecteur - 230V CE
4	4005/5	Paneles Laterales reflector - Conj. de 2	Les Cotés Polies DX - SX
5	210/1	Portalampara - Conj.de 2	Douille - Par 2
6	156/3	Bornes E83 3Poli - 230V CE	Terminal E83 3Poles - 230V CE
7	4130/8	Abrazadera - 230V CE	Serre - Cable - 230V CE
8	4005/9	Cable De Alimentación - 230V CE	Cable De Alimentación - 230V CE
9	4310/20	Pie de gomme -Conjunto de 4	Broche En Gomme - Par 4
10	4005/7	Pie regulable	Pied Régulable
11	4005/8	Carsase cierre de muelle -Conj.de 3	Ressort Crochet Boitier - Par 3
12	4005/22	Manete de ORION	Poignée Pour ORION
13	4005/379	Malla De Protección - 120V cUL	Grillage De protection - 120V cUL
14	4005/21	Reflector - 120V cUL	Reflecteur - 120V cUL
15	261/18	Abrazadera Mk1 - 120V cUL	Serre - Cable Mk1 - 120V cUL
16	156/5	Abrazadera Mk2 - 120V cUL	Serre - Cable Mk2 - 120V cUL
17	156/1	Bornes E82 2Poli - 120V cUL	Terminal E82 2Poles - 120V cUL
18	4005/200	Cable de Alimentación - 120V cUL	Cable De Alimentación - 120V cUL