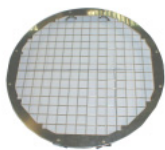




27081 HMI 6 Kw fresnel

### Accessories

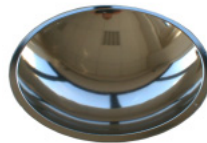
- 28884 Scrim set n.7 (full/half 50% - full/half 66%)
- 28357 Scrim set USA/CAN
- 28209 7m Extension cable 230V
- 28210 15m Extension cable 230V
- 28210 Cable, Extension, HMI 6kW, 50', 120V
- 28887 4 Leaf Barndoor
- 28889 colour frame



**5390/180** WIRE GUARD ASSEMBLY



**5390/103** LENS DIA. 450 MM



**293/25** MIRROR



**5390/105** HINGED BRACKET ASSEMBLY



**5390/104** FIXED BRACKET



**5390/106** COMPLETE HINGE ASSEMBLY



**4511/2** DOOR LOCK ASSEMBLY



**5390/107** HINGE PIN



**5390/210** GUIDE RAILS PACK OF 2 PIECES



**5390/216** FOCUS CONTROL ASSEMBLY



**5390/123** BUSHING FOR GUIDE RAILS



**5485/13** FOCUS KNOB



**5390/109** CARRIAGE



**2090/26** MIRROR SUPPORT



**5390/211** LAMPSOCKET G38 COMPLETE ASSEMBLY



**5390/214** HIGH VOLTAGE CABLE PACK OF 2 PIECES



**2080/44** MICRO SWITCH  
PACK OF 2 PIECES



**5390/217** COMPLETE MICRO  
SWITCH ASSEMBLY



**2080/70** PUSH BUTTON RED



**2080/71** PUSH BUTTON GREEN



**5360/21** PUSH BUTTONS  
SUPPORT



**5360/23** PUSH BUTTON SHIELD



**5390/218** COMPLETE PUSH  
BUTTON ASSEMBLY



**5485/17** HOUR COUNTER  
100-230V 50/60Hz



**3000/13** IGNITER TYPE AD  
6055/Q IREM



**5390/215** IGNITER INSULATING  
SHIELD



**5390/2** INPUT CABLE



**3002/2** IN LINE PLUG



**3002/1** IN LINE SOCKET



**5485/12** CABLE CLAMP WITH  
REDUCTION  
COLLARE



**5485/150** BLACK FOCUS PLUS  
STIRRUP LOCKOFF  
KNOBS AND  
HARDWARE KIT



**5390/220** SKID



| N° | QC Pkg.N° | English   | Italiano   | Deutsch   |
|----|-----------|---|--|---|
| 1  | 5390/180  | Wire Guard Assembly                                     | Rete di Protezione                                 | Schtzgitter   |
| 2  | 5390/103  | Fresnel Lens Dia.450mm                                  | Lente Fresnel Dia.450mm                            | Stufenlinse Dia.450mm   |
| 3  | 293/25    | Mirror  | Specchio   | Reflektor   |
| 4  | 5390/105  | Hinged Bracket Assembly                                 | Orecchiozza Mobile                                 | Torverriegelung   |
| 5  | 5390/104  | Fixed Bracket   | Orecchiozza Fissa                                  | Rahmenhalter  |
| 6  | 5390/106  | Complete Hinge Assembly                                 | Cerniera Completa                                  | Scharnie  |
| 7  | 4511/2    | Door Latch  | Gancio Di Chiusura                                 | Turriegel   |
| 8  | 5390/107  | Hinge Pin   | Perno Cerniera                                     | Achse   |
| 9  | 5390/210  | Guide Rails - Pack of 2 pieces                          | Guide Carrello - Conf.da 2                         | Führungsschienen - 2er Pack                                     |
| 10 | 5390/216  | Focus Control Assembly                                  | Asasieme Comando Carrello                          | Fokkusierenrichtung   |
| 11 | 5390/123  | Bushing for Guide Rails                                 | Boccola Per Guida Carrello                         | Fuehrungsbuchse   |
| 12 | 5485/13   | Focus Knob  | Manopola Focus                                     | Fokkussierknopf   |
| 13 | 5390/109  | Carriage  | Carrello Portaspecchio                             | Reflektorhalter   |
| 14 | 2090/26   | Mirror Support  | Portaspecchio                                      | Reflektortrager   |
| 15 | 5390/211  | Lampsocket G38 Complete Assembly                        | Complesso Portalampada G38                         | Lampensocket G22  |
| 16 | 5390/214  | High Voltage Cables - Pack of 2 pieces                  | Cavi Alta Tensione - Conf.da 2                     | Hochspannungskabel - 2er Pack                                   |
| 17 | 2080/44   | Micro Switch - Pack of 2 pieces                         | Micro Switch - Conf.da 2                           | Mikroschalter - 2er pack  |
| 18 | 5390/217  | Complete Micro Switch Assembly                          | Complesso Micro Switch                             | Mikroschalter, komplett   |
| 19 | 2080/70   | Push Button Red   | Pulsante Rosso                                     | Taster,Rot  |
| 20 | 2080/71   | Push Button Green                                       | Pulsante Verde                                     | Taster,Gruen  |
| 21 | 5360/21   | Push Buttons Support                                    | Supporto per Pulsanti                              | Halterung f. Taster   |
| 22 | 5360/23   | Push Button Shield                                      | Schermo Isolante per Pulsanti                      | Abdeckplatte  |
| 23 | 5390/218  | Complete Push Button Assembly                           | Complesso Pulsantiera                              | Hintere Abdeckplatte fur Zundgerat                              |
| 24 | 5485/17   | Hour Counter 100-230V 50/60Hz                           | Contaore 100-230V 50/60Hz                          | Betriebsstundenzaehler 100-230V 50/60Hz                         |
| 25 | 3000/13   | Igniter Type AD 6055/Q Irem                             | Accenditore Tipo AD 6055/Q Irem                    | Zundeinheit AD 6055/Q Irem                                      |
| 26 | 5390/215  | Igniter Insulating Shield                               | Schermo Isolante per Accenditore                   | Schutzblech fur Zundgerat                                       |
| 27 | 5390/220  | Input Cable   | Assieme Cavo d'alimentazione                       | AnschluBkabel   |
| 28 | 3002/2    | In Line Plug  | Connettore Volante Maschio                         | AnschluBstecker   |
| 29 | 3002/1    | In Line Socket  | Connettore Volante Femmina                         | AnschluBkupplung  |
| 30 | 5485/12   | Cable Clamp with Reduction Collare                      | Serracavo  | Kabelhalterung  |
| 31 | 5485/150  | Black Focus plus Stirrup Lockoff Knobs and Hardware Kit | Kit Viteria piu Manopole Nere per Forcella / Focus | Set fur Fokussierknopfe Bugelbefestigung und bestigungsmaterial |
| 32 | 5390/220  | Skid  | Slitta   | Gleitrolle  |

| N° | QC Pkg.N° | Espanol                                   | Francais  |
|----|-----------|---|---|
| 1  | 5390/180  | Malla de Protección                       | Grillage de Protección                                |
| 2  | 5390/103  | Lente Dia.450mm                           | Lentille Dia.450mm                                    |
| 3  | 293/25    | Espejo                                    | Réfecteur   |
| 4  | 5390/105  | Pinzas Moviles                            | Patte Mobile  |
| 5  | 5390/104  | Pinzas Fijas                              | Pattes Fixes  |
| 6  | 5390/106  | Bisagra Conjuncto Completo                | Charnière Complète                                    |
| 7  | 4511/2    | Cerradura                                 | Locquet Fermeture De Porte                            |
| 8  | 5390/107  | Perni Bisagra                             | Axe De Charniere                                      |
| 9  | 5390/210  | Guias - Conj.de 2                         | Guide Rails Pour Chariot - Par 2                      |
| 10 | 5390/216  | Conjunto Control Focal                    | Ensemble De Focalisation                              |
| 11 | 5390/123  | Forros de Guias                           | Tige Cannelée   |
| 12 | 5485/13   | Regulador Focal                           | Bouton de Focalisation                                |
| 13 | 5390/109  | Carro                                     | Chariot   |
| 14 | 2090/26   | Soporte Espejo                            | Support Réfecteur                                     |
| 15 | 5390/211  | Portalampara G22                          | Douille G22   |
| 16 | 5390/214  | Cables alta Tensión - Conj.de 2           | Cables Haute Tensions - Par 2                         |
| 17 | 2080/44   | Microinterruptor - Conj.de 2              | Micro Interrupteur - Par 2                            |
| 18 | 5390/217  | Conjunto de Microinterruptor              | Ensemble complet Micro Interrpteur                    |
| 19 | 2080/70   | Pulsador Rojo                             | Bouton Poussoir Rouge                                 |
| 20 | 2080/71   | Pulsador Verde                            | Bouton Poussoir Vert                                  |
| 21 | 5360/21   | Soporte Pulsadores                        | Support Boutons Poussoirs                             |
| 22 | 5360/23   | Protección Pulsadores                     | Protection De Boutons Poussoirs                       |
| 23 | 5390/218  | Conjunto de Pulsadores                    | Ensemble Boutons Poussoirs                            |
| 24 | 5485/17   | Contador Horas 100-230V 50/60Hz           | Compteur Horaire 100-230V 50/60Hz                     |
| 25 | 3000/13   | Interrup De Encendido AD 6055/Q Irem      | Amorceur AD 6055/Q Irem                               |
| 26 | 5390/215  | Protección aislante de Ignitor            | Protection isolante D'Amorceur                        |
| 27 | 5390/220  | Cable De Alimentación                     | Cable D'Alimentation                                  |
| 28 | 3002/2    | Connector Volante Macho                   | Fiche Mâle  |
| 29 | 3002/1    | Connector Volante Hembra                  | Fiche Femelle   |
| 30 | 5485/12   | Abrazadera                                | Presse étoupe   |
| 31 | 5485/150  | Kit Tirador para Focus - Fijacion Estribo | Kit Poignées Pour Focus - Fixation Lyre plus Visserie |
| 32 | 5390/220  | Patin                                     | Patin   |