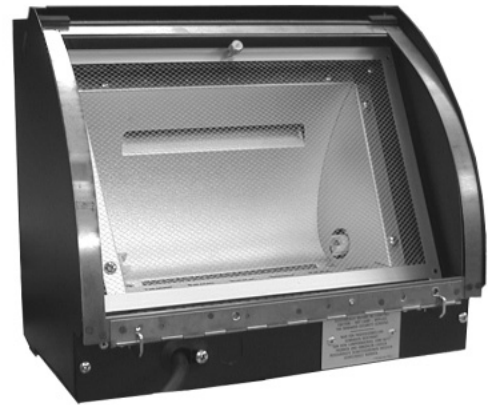




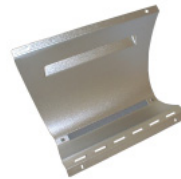
26010 ORION 1 1250 W 230V CE
 26011 ORION 1 1000 W 120V - USA/CAN



4005/180 WIRE GUARD ASSEMBLY - 230V CE



4000/165 COLOUR FRAME



4005/6 MIRROR - 230V CE



4005/5 MIRROR SIDE PANELS PACK OF 2 PIECES



210/1 LAMPSOCKETS PACK OF 2 PIECES



156/3 CERAMIC TERMINAL BLOCK E83-3 WAY 230V CE



4130/8 CABLE CLAMP 230V CE



4005/9 INPUT CABLE 230V CE



4310/20 RUBBER FOOT PACK OF 4 PIECES



4005/7 ADJUSTABLE FOOT



4005/8 HOUSING CONNECTORS CLIP PACK OF 3 PIECES



4005/22 HANDLE FOR ORION



4005/379 WIRE GUARD ASSEMBLY 120V cUL



4005/21 MIRROR -120V cUL



261/18 CABLE CLAMP MK1 120V cUL



156/5 CABLE CLAMP MK2 120V cUL



156/1 CERAMIC TERMINAL
BLOCK E82-2 WAY
120V - cUL



4005/200 INPUT CABLE
ASSEMBLY – 120V cUL

N°	QC Pkg.N°	English	Italiano	Deutsch
1	4005/180	Wire Guard Assembly - 230V CE	Rete Di Protezione - 230V CE	Schtzgitter - 230V CE
2	4000/165	Colour Frame	Portagelatina	Fafilter
3	4005/6	Mirror - 230V CE	Specchio - 230V CE	Reflektor - 230V CE
4	4005/5	Mirror Side Panels L & R - Pack of 2 pieces	Fiancate Lucide DX - SX Conf.da 2	Reflektorseitenwaende
5	210/1	Lampsockets - Pack of 2 pieces	Portalampane - Conf.da 2	Socket - 2er Pack
6	156/3	Ceramic Terminal Block E83 3-way 230V CE	Morsettiera in steatite E83 3Poli - 230V CE	Klemmenleiste E83 3Pole - 230V CE
7	4130/8	Cable Clamp - 230V CE	Serracavo - 230V CE	Kabelhalterung - 230V CE
8	4005/9	Input Cable - 230V CE	Cavo D'alimentazione - 230V CE	Anschlusskabel - 230V CE
9	4310/20	Rubber Foot - Pack of 4 pieces	Piedino in Gomma - Conf.da 4	Gummifuss - 4 Stueck
10	4005/7	Adjustable Foot	Piede Regolabile	Verstellbarer Fuss
11	4005/8	Housing Connector Clip - Pack of 3 pieces	Molla Aggancio Involucro - Conf.da 3	Gehaueverbindungsfeder - 3 Stueck
12	4005/22	Handle for ORION	Maniglia per ORION	Handgriff fur ORION
13	4005/379	Wire Guard Assembly - 120V cUL	Rete Di protezione - 120V cUL	Schutzgitter - 120V cUL
14	4005/21	Mirror - 120V cUL	Specchio - 120V cUL	Reflektor - 120V cUL
15	261/18	Cable Clamp Mk1 - 120V cUL Valid only for ORION 1 prior to the year 2000	Serracavo - 120V cUL Valido per ORION 1 prima dell'anno 2000	Kabelhalterung Mk1 - 120V cUL Nur gueltig fuer Orion 1 vor dem Jahr 2000
16	156/5	Cable Clamp Mk2 - 120V cUL	Serracavo Mk2 - 120V cUL	Kabelhalterung Mk2 - 120V cUL
17	156/1	Ceramic Terminal Block E82 2way -120V cUL	Morsettiera in steatite E82 2Poli - 120V cUL	Klemmenleiste E82 2Pole - 120V cUL
18	4005/200	Input Cable Assembly - 120V cUL	Cavo D'alimentazione - 120V cUL	Anschlusskabel - 120V cUL

N°	QC Pkg.N°	Espanol	Francais
1	4005/180	Malla De Proteccion - 230V CE	Grillage De protection - 230V CE
2	4000/165	Portafiltro	Portefiltre
3	4005/6	Reflector - 230V CE	Reflecteur - 230V CE
4	4005/5	Paneles Laterales reflector - Conj. de 2	Les Cotés Polies DX - SX
5	210/1	Portalampara - Conj.de 2	Douille - Par 2
6	156/3	Bornes E83 3Poli - 230V CE	Terminal E83 3Poles - 230V CE
7	4130/8	Abrazadera - 230V CE	Serre - Cable - 230V CE
8	4005/9	Cable De Alimentación - 230V CE	Cable De Alimentación - 230V CE
9	4310/20	Pie de gomme -Conjunto de 4	Broche En Gomme - Par 4
10	4005/7	Pie regulable	Pied Régulable
11	4005/8	Carsase cierre de muelle -Conj.de 3	Ressort Crochet Boitier - Par 3
12	4005/22	Manete de ORION	Poignée Pour ORION
13	4005/379	Malla De Protección - 120V cUL	Grillage De protection - 120V cUL
14	4005/21	Reflector - 120V cUL	Reflecteur - 120V cUL
15	261/18	Abrazadera Mk1 - 120V cUL	Serre - Cable Mk1 - 120V cUL
16	156/5	Abrazadera Mk2 - 120V cUL	Serre - Cable Mk2 - 120V cUL
17	156/1	Bornes E82 2Poli - 120V cUL	Terminal E82 2Poles - 120V cUL
18	4005/200	Cable de Alimentación - 120V cUL	Cable De Alimentación - 120V cUL



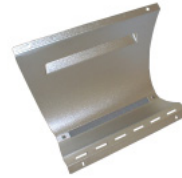
26045 Orion 4 fixed - 230V
26055 Orion 4 hinged - 230V



4005/180 WIRE GUARD
ASSEMBLY - 230V CE



4000/165 COLOUR FRAME



4005/6 MIRROR - 230V CE



4005/5 MIRROR SIDE PANELS
PACK OF 2 PIECES



210/1 LAMP SOCKETS
PACK OF 2 PIECES



156/1 CERAMIC TERMINAL
BLOCK E82-2 WAY



4010/6 TERMINAL BLOCK
8 -WAY



5360/24 CABLE CLAMP



4005/7 ADJUSTABLE FOOT



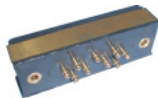
4310/20 RUBBER FOOT
PACK OF 4 PIECES



4005/8 HOUSING
CONNECTORS CLIP
PACK OF 3 PIECES



4005/22 HANDLE FOR ORION



4010/7 PANEL CONNECTOR
9PIN MALE ASSEMBLY
ONLY MK1 VERSION



4010/11 COMPARTMENT
CONNECTION
CABLE
ONLY MK1 VERSION



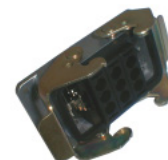
4010/16 SUPPORT PANEL
CONNECTOR 9PIN
MALE ASSEMBLY MK2



4010/14 PANEL CONNECTOR
9PIN ASSEMBLY MK2



4010/13 COMPARTMENT
CONNECTION
CABLE MK2



4010/10 PANEL CONNECTOR
MALE 9PIN MK2



4010/12 IN LINE 9 PIN
SOCKET CONNECTOR
MK2



28013 INPUT CABLE
ASSEMBLY
1X4 UNITS MK2



28014 ADAPTER CABLE
ORION 4
MK1 AND MK2



N°	QC Pkg.N°	English	Italiano	Deutsch
----	-----------	---------	----------	---------

Spare Parts Valid for Both Mk1 and Mk2 Versions

1	4005/180	Wire Guard Assembly	Rete Di Protezione	Schtzgitter
2	4000/165	Colour Frame	Portagelatina	Farbfilter
3	4005/6	Mirror	Specchio	Reflektor
4	4005/5	Mirror Side Panels L & R - Pack of 2 pieces	Fiancate Lucide DX & SX - Conf.da 2	Reflektorseitenwaende
5	210/1	Lampsockets - Pack of 2 pieces	Portalampane - Conf.da 2	Socket - 2er Pack
6	156/1	CeramicTerminal Block E82 - 2way	Morsettiera in steatite E82 - 2Poli	Klemmenleiste E83 3Pole - 230V CE
7	4010/6	Terminal Block 8-way	Morsettiera 8Poli	Klemmenleiste 8Pole
8	5360/24	Cable Clamp	Serracavo	Kabelhalterung
9	4005/7	Adjustable Foot	Piede Regolabile	Verstellbarer Fuss
10	4310/20	Rubber Foot - Pack of 4 pieces	Piedino in Gomma - Conf.da 4	Gummifuss - 4 Stueck
11	4005/8	Housing Connector Clip - Pack of 3 pieces	Molla Aggancio Involucro - Conf.da 3	Gehaeuseverbindungsfeder - 3 Stueck
12	4005/22	Handle for ORION	Maniglia per ORION	Handgriff fur ORION

Spare Parts Valid Only for Mk1 Versions (4010.103 and 4020.103 prior to the year 1998)

13	4010 / 7	Panel Connector 9Pin Male Assembly	Assieme Connettore da pannello 9Pin Maschio	Anschluss -Set 9Pins maennlich
14	4010/11	Input Cable Assembly	Cavo D'alimentazione	Anschlusskabel

Spare Parts Valid Only for Mk2 Versions

15	4010/16	Support - Panel Connector 9Pin Male Mk2	Support per Connettore da Pannello 9Pin maschio	Halterung fuer Anschluss 9 Pins maennlich maschio
16	4010/14	Panel Connector 9Pin Assembly Mk2	Assieme Connettore 9Pin Da Pannello	Panel Anschluss - Set 9 Pins maennlich
17	4010/13	Compartment Connection Cable Mk2	Cavo di Colegamento	Verbindungskabel
18	4010/10	Panel Connector Male 9Pin Mk2	Connettore da Pannello 9Pin Maschio	Panel - Anschluss 9 Pins maennlich
19	4010/12	In-Line 9Pin Socket Connector Mk2	Connettore Volante 9Pin Femmina	Anschlusskupplung
20	28013	Input cable Assembly 1 x 4 units Mk2	Cavo D'alimentazione	Anschlusskabel

Adapter Parts Mk1 to Mk2 Versions

21	28014	Adapter Cable ORION 4	Cavo Adattatore ORION 4	Adapterkabel ORION 4
----	-------	-----------------------	-------------------------	----------------------

N°	QC Pkg.N°	Espanol	Francais
----	-----------	---------	----------

Spare Parts Valid for Both Mk1 and Mk2 Versions

1	4005/180	Malla De Protección	Grillage De protection
2	4000/165	Portafiltro	Portefiltre
3	4005/6	Reflector - 230V CE	Reflecteur - Europa
4	4005/5	Paneles laterales Reflector - Conj. De 2	Les Cotès Polies DS - SX
5	210/1	Portalampara - Conj.de 2	Douille - Par 2
6	156/1	Bornes E83 3Poli - 230V CE	Terminal E82 2Poles
7	4010/6	Bornes 8Poli	Barrrette de connexion 8Poles
8	5360/24	Abrazadera Cable	Serre - Cable
9	4005/7	Pie regulable	Pied Régulable
10	4310/20	Pie de goma - Conjunto de 4	Broche en gomme - Par 4
11	4005/8	Carsase cierre de muelle - Conj.de 3	Ressort Crochet Boitier - Par 3
12	4005/22	Maneta de ORION	Poignée pour ORION

Spare Parts Valid Only for Mk1 Versions (4010.103 and 4020.103 prior to the year 1998)

13	4010 / 7	Panel Conector macho de 9 Pines	Ensemble connecteur 9Pin Mâle Pour Panneau
14	4010/11	Cable De Alimentación	Câble D'alimentation

Spare Parts Valid Only for Mk2 Versions

15	4010/16	Soporte de Panel conector Macho de 9 Pines	Support Pour Connecteur à Panneau 9Pin Mâle
16	4010/14	Conjunto de Panel Conector	Ensemble connecteur 9Pin Mâle
17	4010/13	Compartimento de Conector	Cable D'alimentation
18	4010/10	Connector Panel 9Pin Macho	Connecteur Pour Panneau 9Pin Mâle
19	4010/12	Connector Volante 9Pin Hembra	Connecteur volant 9Pin Femelle
20	28013	Cable De Alimentación	Câble D'alimentation

Adapter Parts Mk1 to Mk2 Versions

21	28014	Cable Adaptador ORION 4	Câble Adapteur ORION 4
----	-------	-------------------------	------------------------